



Start your artwork file at 300 ppi (pixels per inch). Then add Dilco template on new top layer.



dilco®

714 998 5266

Dilco® 2.5" x 4.5" Round Top Bottle Necker Template with 1.39" Hole and Pop-Up

Make sure all graphics stay within Dilco template Dieline so they aren't cut off. Leave a little "breathing" room inside Dieline.

Do not scale or change your Dilco template. And make sure to keep it on its own layer.

Don't change colors. Pop-up will be the same color as top half of bottle necker.

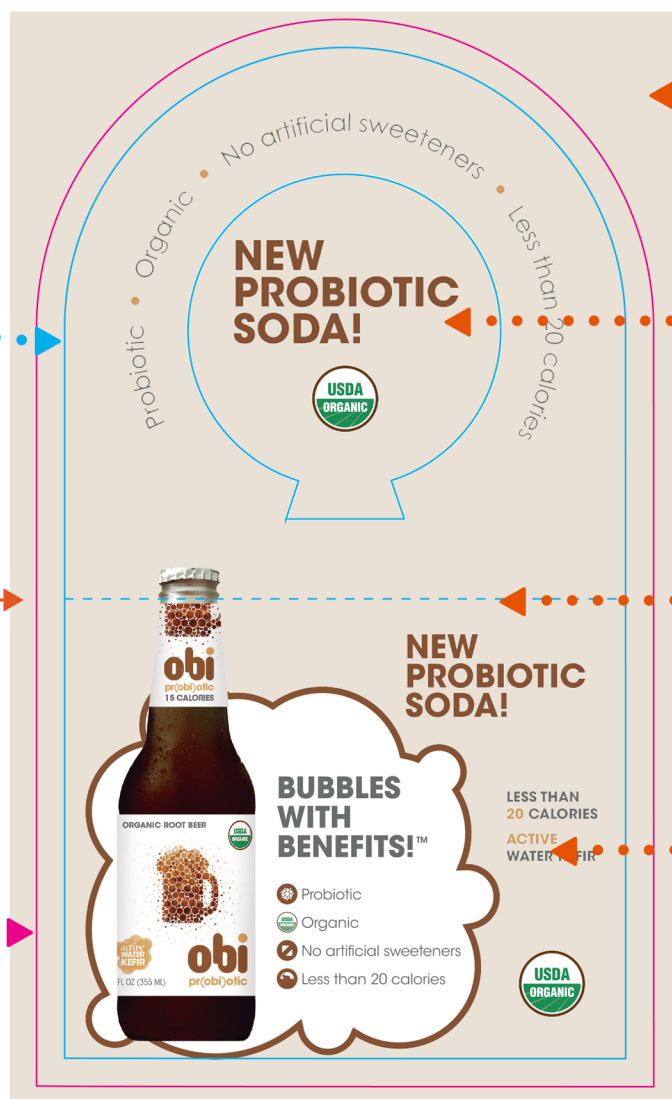
This is your score line where bottle necker will bend to follow contour of bottle.

Proof-read your text! Dilco is not responsible for errors.

Don't merge or flatten layers. The Dilco Art Dept. needs all layers separate and intact.

Score Line

Your background color and/or image needs to go up to or beyond the Bleed Line on Dilco template.



Dieline

This is where artwork will be cut off



Bleed Line

Background must come to this line